

# Vidacom CIC

Helping to  
create confident  
communities

The 'new CIC'  
on your block...

[www.vidacom.co.uk](http://www.vidacom.co.uk) Attleborough NR17 2DD 01953 453605



# What do we want?

- ▶ To be an active part of Partnerships & Consortias who are working to help local communities & vulnerable people become stronger
- ▶ To work with:
  - ▶ you
  - ▶ your group
  - ▶ your organisation





# The Vidacom family...



Janice

Alex

Tom

Bob

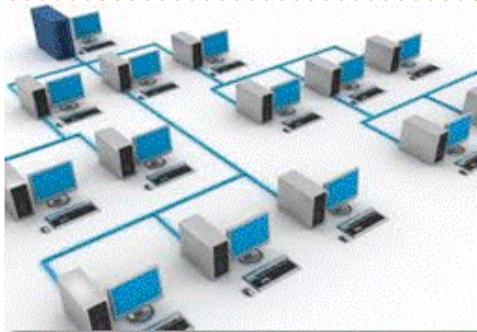
**...working together with passion and enthusiasm to achieve a common goal.**



# Why would you want us?

We have successfully made a difference to local communities & vulnerable people within the:

- ▶ Community & Voluntary Sector
- ▶ Health & Social Care
- ▶ Education – working with disadvantaged, hard to reach, & vulnerable people etc.
- ▶ Social Housing





## Differences we have made in the Community & Voluntary sector

- ▶ **People power** - Developed new ways of working which helped people in rural Norfolk access information, advice & informal learning quicker & easier
- ▶ **Metrics** - Developed ways to measure outputs & outcomes for small & medium size organisations
- ▶ **Sustainable diversification** - Developed ways which small & medium size community groups could provide evidence of diversification to funding bodies & so access different & more sustainable types of funding
- ▶ **Big Society** - Established local community groups which work with local authorities, co-producing, sense checking & 'signing off' their proposals & change activity



## Differences we have made in the Education sector

- ▶ **Learning which works** – Created & taught learning programmes which worked for;
  - young people (14-19yrs) who hadn't done so well at school
  - adults who hadn't done so well or who wanted to try new or different things
- ▶ **Diverse partnerships which works** - Established wider & more diverse partnerships bringing together statutory educational organisations with 'go getting' individuals & groups



## Differences we have made in the Health & Social Care sector

- ▶ **New service models** - Developed new ways to deliver services
- ▶ **Solutions found** - Identified gaps in existing & proposed processes & systems, & worked to find solutions
- ▶ **Trust & communication** - Worked to rebuild trust & communication routes with local people & community groups



## Differences we have made in the Social Housing sector

- ▶ **Self-Serve** - Project Managed the implementation of an HR system that allowed all users to access their personal data.
- ▶ **Cash Receipting** - Quality assured that a new Cash Collection system was fit for purpose with minimal barriers to Vulnerable people and those with disabilities.
- ▶ **Component Accounting – Project** Managed the Component Accounting Implementation to meet SORP requirements. Specified and implemented the Fixed Asset policy to cover Aids and Adaptations.



# Lets share a coffee and talk...



Bob Bones

email: [bbones@vidacom.co.uk](mailto:bbones@vidacom.co.uk)

Tel: 07919 038751



Janice James

email: [Janice.James@Vidacom.co.uk](mailto:Janice.James@Vidacom.co.uk)

Tel: 07771 691 069

[www.vidacom.co.uk](http://www.vidacom.co.uk) Attleborough NR17 2DD 01953 453605



# HELP - Do you work with vulnerable people?

If so would you ask them if they would be willing to volunteer to be part of an initial meeting to explore issues & opportunities to help vulnerable people be more included in everyday activities in our communities, town & cities?

► **Please talk to us** if you can help us...

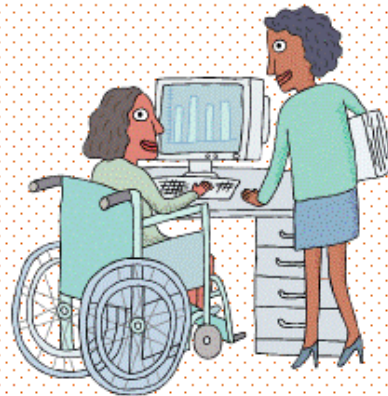
[www.vidacom.co.uk](http://www.vidacom.co.uk) **Attleborough NR17 2DD 01953 453605**



# Vulnerable people

Is a term which includes a whole range of people. At this moment in time Vidacom CIC is focusing on the following groups of vulnerable people:

- Learning Disabilities
- Physical Disabilities



- Visual impairments
- Hearing impairments



**learning disabilities**